



7 Parkinson Street Bolton

£125 Per Week

** TWO ROOMS AVAILABLE **

Welcome to this charming period property located on Parkinson Street in the vibrant town of Bolton. This delightful house share offers a comfortable living experience, perfect for professionals seeking a welcoming environment. The property features four well-appointed bedrooms, ensuring ample space for relaxation and privacy.

With gas central heating throughout, you can enjoy a warm and cosy atmosphere during the colder months. The property is designed as a House in Multiple Occupation (HMO), making it an ideal choice for those looking to share living expenses while enjoying the benefits of a community setting.

Situated in Bolton, this property is well-connected to local amenities, transport links, and recreational areas, making it a prime location for professionals. Whether you are looking to rent a room or seeking a vibrant community to call home, this property on Parkinson Street is sure to meet your needs. Don't miss the opportunity to experience comfortable living in a charming period setting.



- Dining/ kitchen • Shared lounge & kitchen • Double Glazing • En suite rooms • Flexible Accommodation • Gas Central Heating • Modern decor • Shower room

Hallway

Upvc door, radiator.

Lounge

Upvc double glazed window to front, radiator.

Dining Room

Upvc window to rear, radiator, stair leading to first floor.

Kitchen

Upvc window to rear, wall and floor mounted cupboards, space for fridge freezer and oven, stainless steel sink unit.

Bedroom 1

Upvc double glazed window, radiator

Bedroom 2

Upvc double glazed window to rear, radiator, boiler.

Bathroom

White panel bath, shower over, pedestal wash hand basin, low level WC, radiator, tiling to all walls.

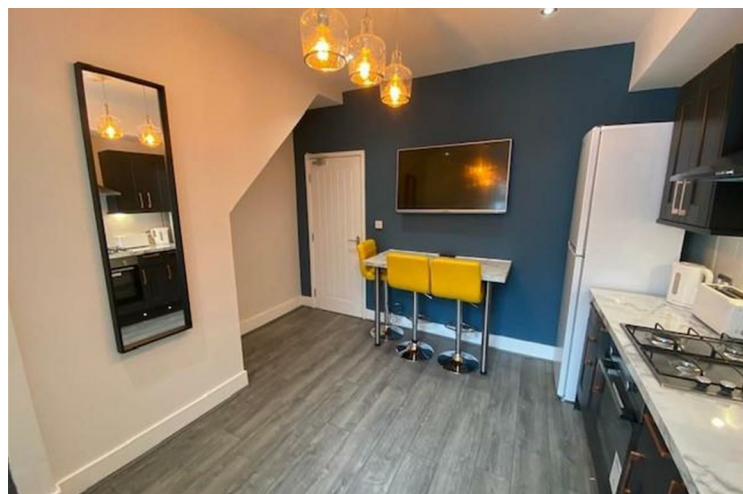
Outside Rear

Enclosed rear yard, Brick walls to all sides, wooden entry gate,

Disclaimer

Disclaimer: The information and images provided in this property advertisement are intended for guidance purposes only. While we make every effort to ensure the accuracy of the details, we strongly recommend that interested parties view the property in person to confirm the property's condition and suitability for their specific requirements. The photographs used in this advertisement may have been digitally

enhanced and may not accurately represent the current condition of the property. Any measurements or distances provided are approximate and should not be relied upon for any purpose. Furthermore, the description and details provided are based on the landlord's understanding and may be subject to change without notice. Prospective tenants are advised to verify any specific details that are important to them before entering into any agreement. We do not accept any liability for any loss or damage, whether direct or indirect, arising from reliance upon the information provided in this advertisement. We strongly advise all parties to seek professional advice and conduct their own due diligence before making any decisions or commitments related to this property. By viewing this advertisement, you agree to the above disclaimer and acknowledge that any reliance on the information provided is at your own risk. Please note that this disclaimer is subject to change and may be updated without prior notice







Energy Efficiency Rating		
	Current	Potential
Very energy efficient - lower running costs		
(92 plus) A		
(81-91) B		
(69-80) C		
(55-68) D		
(39-54) E		
(21-38) F		
(1-20) G		
Not energy efficient - higher running costs		
England & Wales	EU Directive 2002/91/EC	

Agents Note: Whilst every care has been taken to prepare these particulars, they are for guidance purposes only. All measurements are approximate and are for general guidance purposes only and whilst every care has been taken to ensure their accuracy, they should not be relied upon and potential buyers/tenants are advised to recheck the measurements

Little Lever Mistoria
21A Market Street
Little Lever
Bolton
BL3 1HH

01204 800 765
info@mistoria.co.uk
mistoria.co.uk

